



**NEW ENERGY METALS**  
CORP.

**NEW ENERGY IS GREEN ENERGY**

**TSX-V: ENRG**

**OTC: NRGYF**

# COMPETITIVE ADVANTAGES



Capable management team with a combined **50+ years experience** in the public markets



Both BC and Ontario are **top mineral producing jurisdictions** and attract significant investments



Option to purchase 100% interest in the 3,788 ha **Atikokan Lithium property**



Bulk rock chemistry at Atikokan showed a **significant number of anomalous lithium values**



Option to purchase 100% interest in the 5,100 ha **Roslyn Lithium project**



Option to purchase 100% interest in the 7,000 ha **Troitsa Copper project**



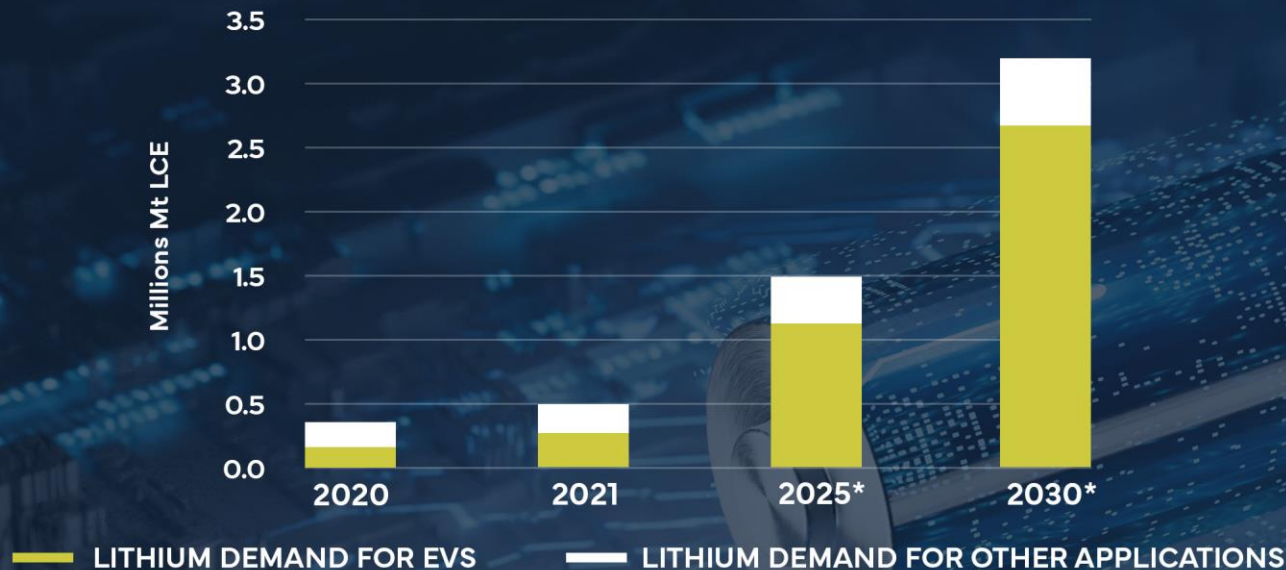
NEW ENERGY METALS  
CORP.

TSX-V: ENRG

OTC: NRGYF

## LITHIUM DEMAND BY APPLICATION

MILLIONS OF METRIC TONS PER ANNUM OF LITHIUM CARBONATE EQUIVALENT



\*Forecast

Source: Global X ETFs with information derived from: Norris, E. (2022, June 27). Building a domestic ecosystem: Fastmarkets lithium supply and battery raw materials 2022. Albemarle.

# COPPER & THE CLEAN ENERGY REVOLUTION



Goldman Sachs recently presented a bullish forecast for the copper market for 2023-24, with its analysts expecting the price will jump from current US\$8500/t to \$11,000/t this year, increasing to US\$12,000/t.\*



Future clean energy sources, including solar and wind, estimates copper usage 4-6 times more than fossil fuels.\*\*



Electric vehicles have a much higher copper content compared to their predecessors:\*\*\*

INTERNAL COMBUSTION ENGINE

48LB

HYBRID ELECTRIC VEHICLE

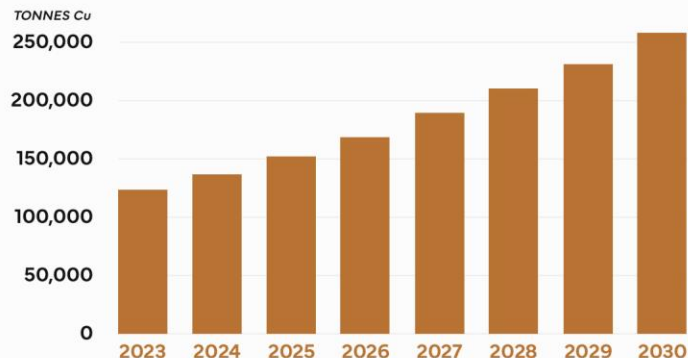
88LB

BATTERY ELECTRIC VEHICLE

183LB



The annual demand for copper from electric vehicles is estimated to reach more than 250,000 tonnes by 2030.\*\*\*\*



# ATIKOKAN LITHIUM PROPERTY

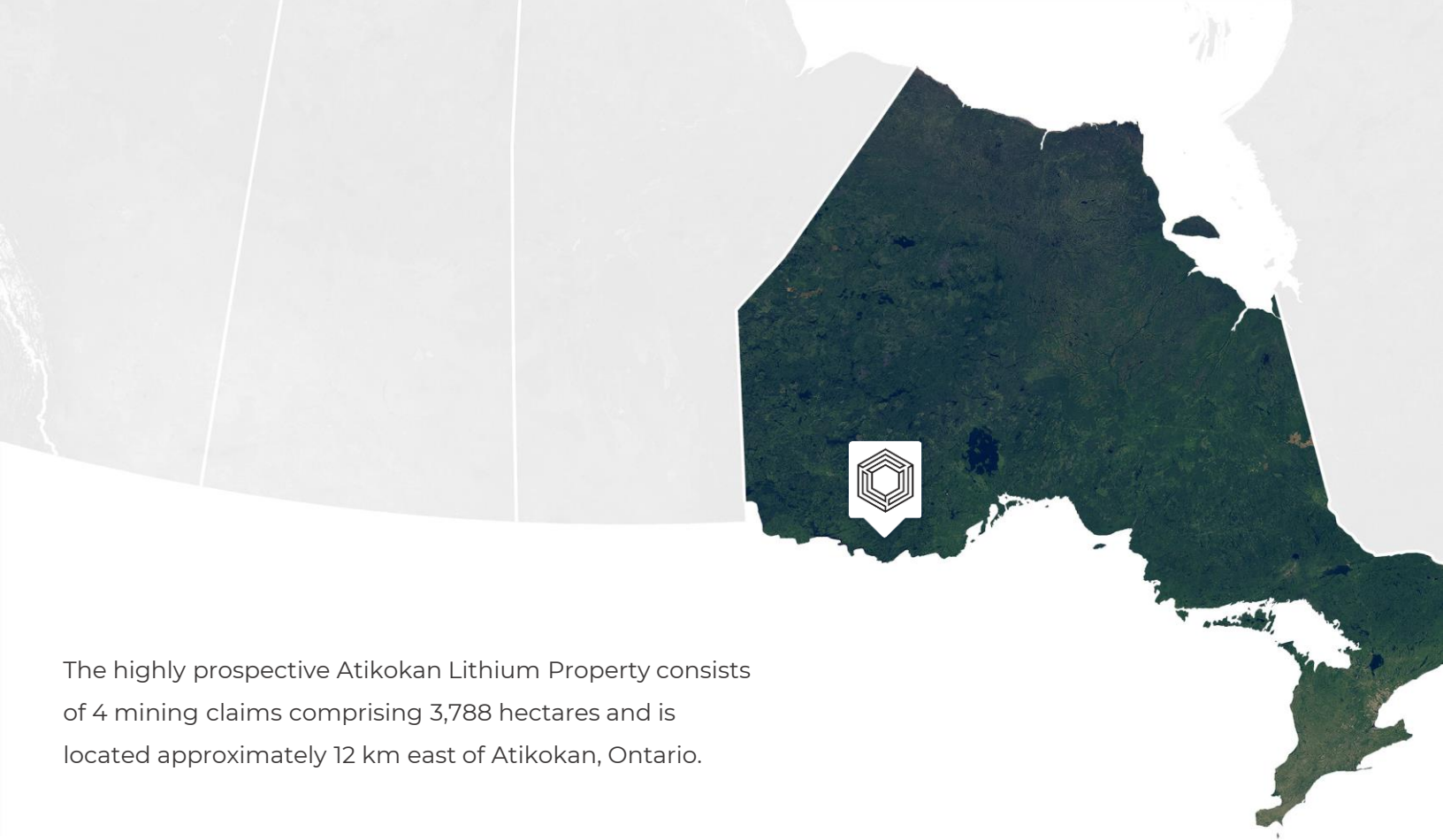
ATIKOKAN, ONTARIO



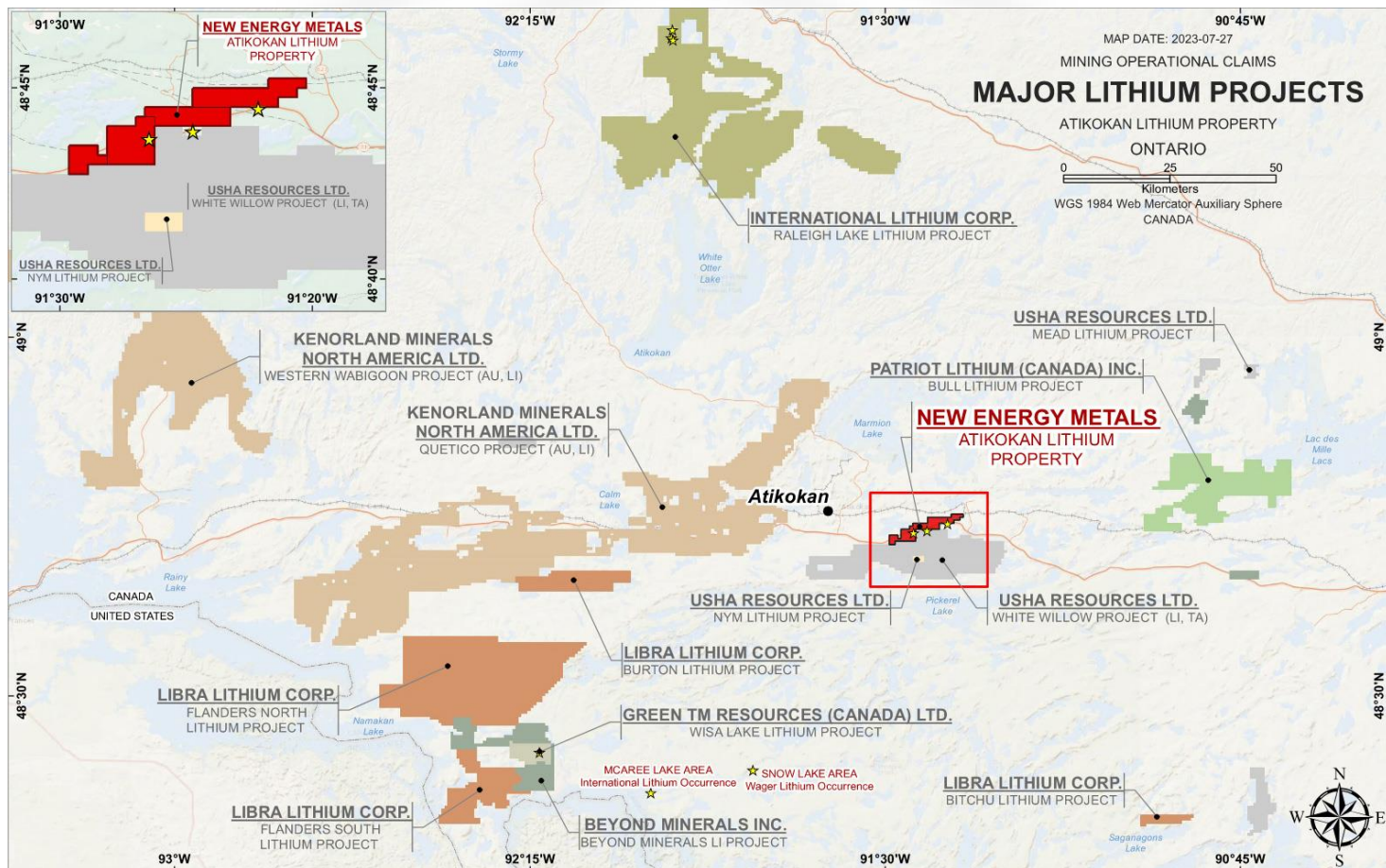
**NEW ENERGY METALS**  
CORP.

TSX-V: **ENRG**

OTC: **NRGYF**

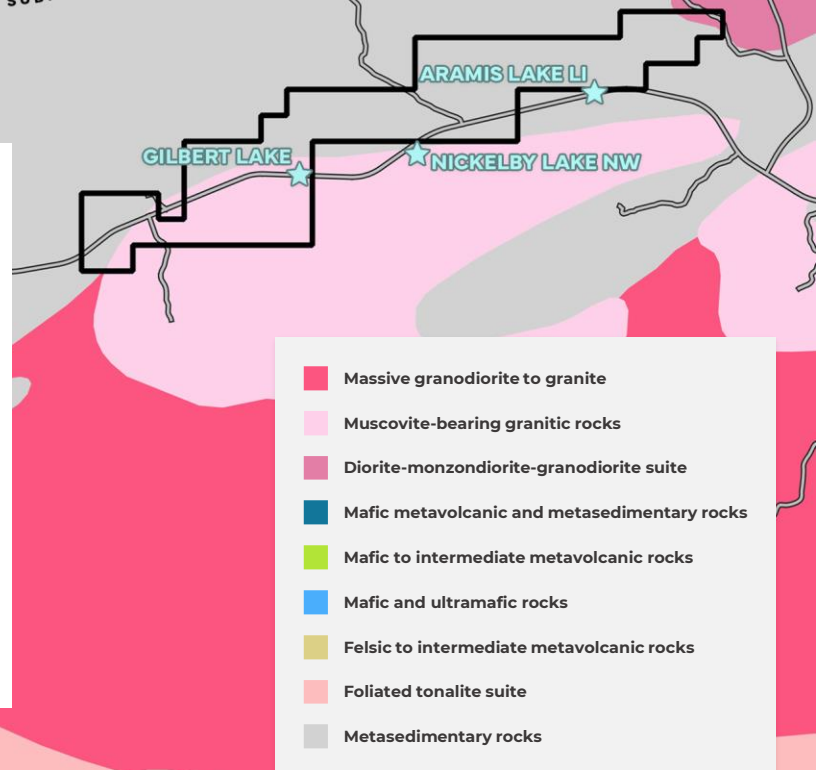


The highly prospective Atikokan Lithium Property consists of 4 mining claims comprising 3,788 hectares and is located approximately 12 km east of Atikokan, Ontario.





The claims straddle the contact between a peraluminous S-type muscovite-bearing granite and metasediments within the Quetico subprovince (Figure 2). The Quetico-Marmion subprovincial boundary lies just 4 km north of the Property. Numerous lithium deposits of northwestern Ontario occur proximal to a subprovincial boundary (Breaks et al., 2003). Muscovite-bearing pegmatite dykes and small pegmatitic granite masses are widely exposed along Highway 11 between Nym Lake Road junction and west to Niobe Lake (McIlwaine and Larsen 1981a, 1981b). Historically, the Atikokan area has documented strongly anomalous lake sediment results in Li, Rb, Cs, Ga and Sn (Jackson, 2001).

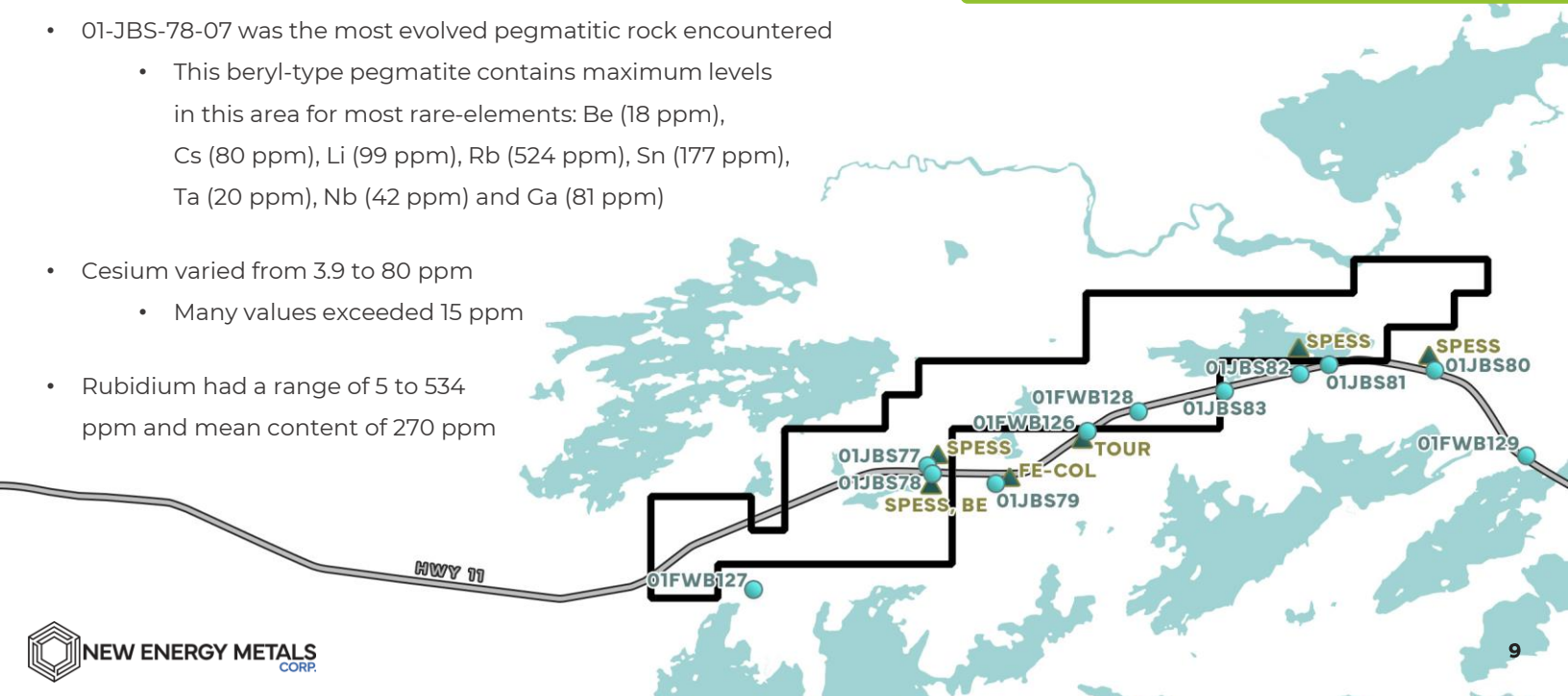


In 2003, Breaks et al., 16 bulk rock samples were taken along Highway 11 largely within the Property boundary. Highlights include:

- Bulk rock chemistry showed a significant number of anomalous lithium values
- Lithium ranged from 11 to 164 ppm with a mean content of 72 ppm
- 01-JBS-78-07 was the most evolved pegmatitic rock encountered
  - This beryl-type pegmatite contains maximum levels in this area for most rare-elements: Be (18 ppm), Cs (80 ppm), Li (99 ppm), Rb (524 ppm), Sn (177 ppm), Ta (20 ppm), Nb (42 ppm) and Ga (81 ppm)
- Cesium varied from 3.9 to 80 ppm
  - Many values exceeded 15 ppm
- Rubidium had a range of 5 to 534 ppm and mean content of 270 ppm

"The anomalous Li, Rb, Cs, Sn and Ga documented in the bedrock by this survey corroborate the earlier lake sediment geochemistry work of Jackson (2001). The discovery of columbite-tantalite group minerals and beryl by this survey gives strong indications that, with careful prospecting, further rare-element minerals may be discovered."

- Breaks et al., 2003



# ROSLYN LITHIUM PROPERTY

GEORGIA LAKE PEGMATITE FIELD, ONTARIO

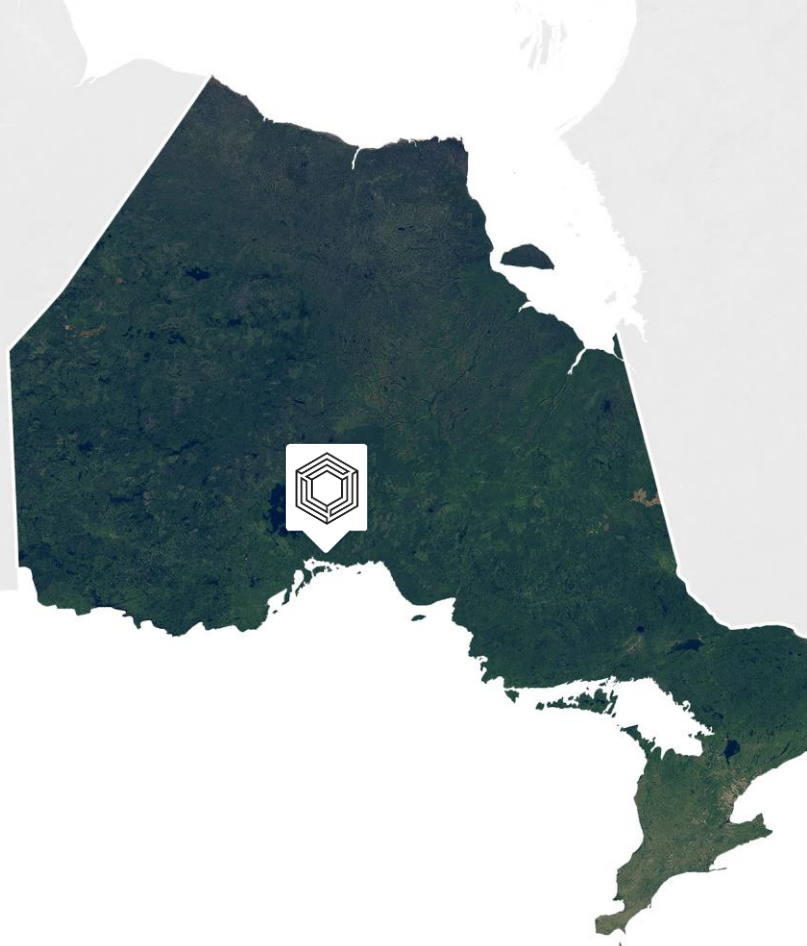


**NEW ENERGY METALS**  
CORP.

TSX-V: **ENRG**

OTC: **NRGYF**

The Roslyn Lithium Property is comprised of 12 claims totaling 5,100 hectares, located 50 km northeast of Nipigon, northwestern Ontario. The Property is located 20 km southeast of the Georgia Lake Pegmatite Field and 35 km southeast of where Rock Tech Lithium just published a PEA supporting the indicated mineral resource of 10.6 Mt (million tonnes) grading 0.88%  $\text{Li}_2\text{O}$  and an inferred mineral resource of 4.2 Mt grading 1.0%  $\text{Li}_2\text{O}$ .\*



# HIGHLIGHTS

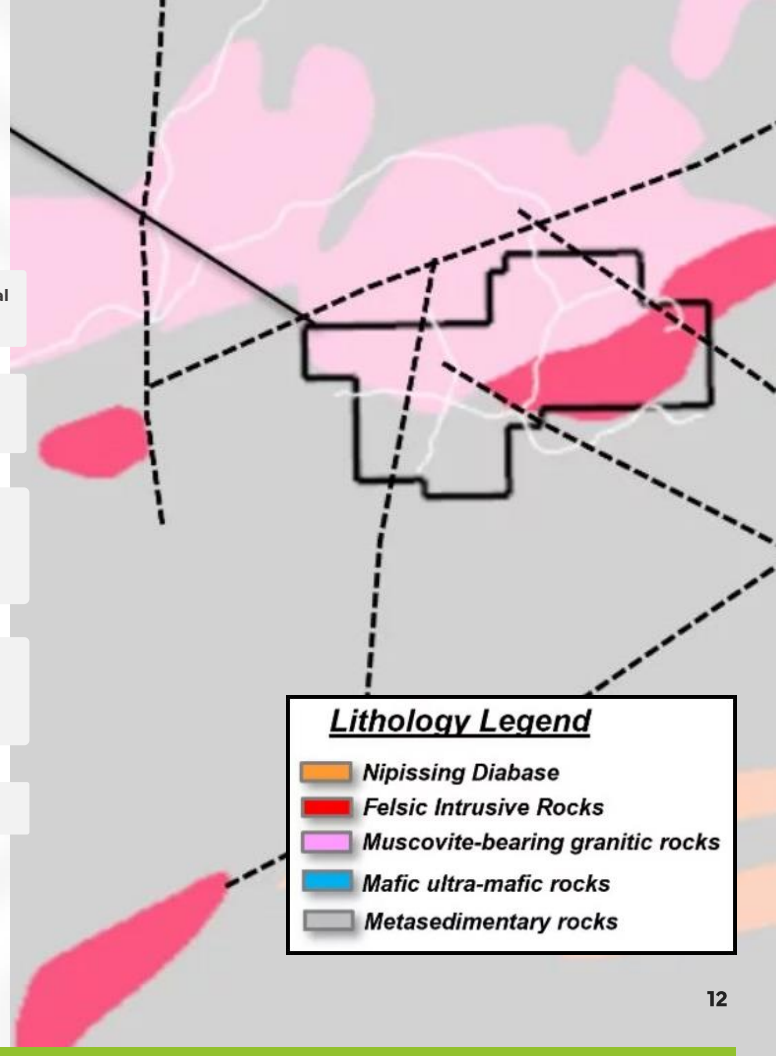
A muscovite-bearing granite is host to the Property, an S-type peraluminous fertile parental granite and in contact with metasediments which make excellent hosts for pegmatites\*

Numerous faults transect the Property providing excellent pathways for granitic melts and evolving pegmatites






The Georgia Lake pegmatite field is considered the largest concentration of rare element mineralization in the Superior Province. The 32 x 105 km pegmatite field hosts 38 rare-element occurrences and 10 spodumene pegmatite deposits and occurrences\*

Several white pegmatites with garnet and tourmaline have been documented and mapped on the Property by the OGS in 1970 (Ontario Department of Mines map M2293); These are very good indications of fertile granitic melts

The Property has logging road access from the Trans-Canada Highway 11



## Lithology Legend

-  Nipissing Diabase
-  Felsic Intrusive Rocks
-  Muscovite-bearing granitic rocks
-  Mafic ultra-mafic rocks
-  Metasedimentary rocks



10 km

TEARLACH RESOURCES



ROCK TECH LITHIUM



BRUNSWICK EXPLORATION



IMAGINE LITHIUM



GEORGIA LAKE PEGMATITE FIELD, ONTARIO



NEW ENERGY METALS



NEW ENERGY METALS  
CORP.



# TROITSA COPPER PROJECT

CENTRAL BRITISH COLUMBIA

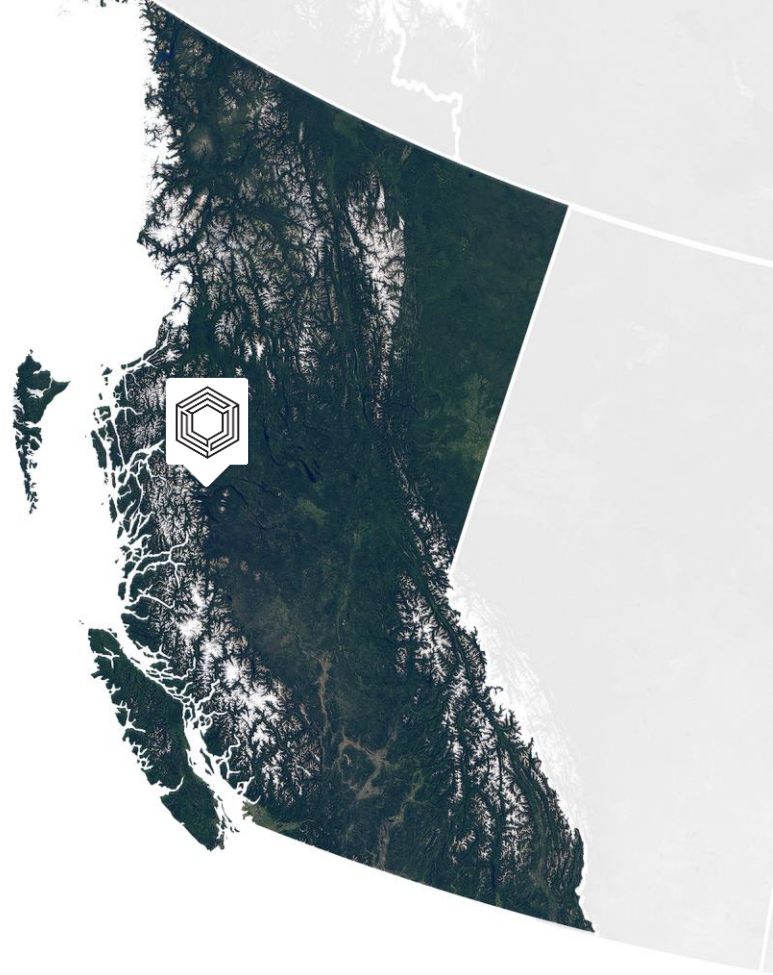


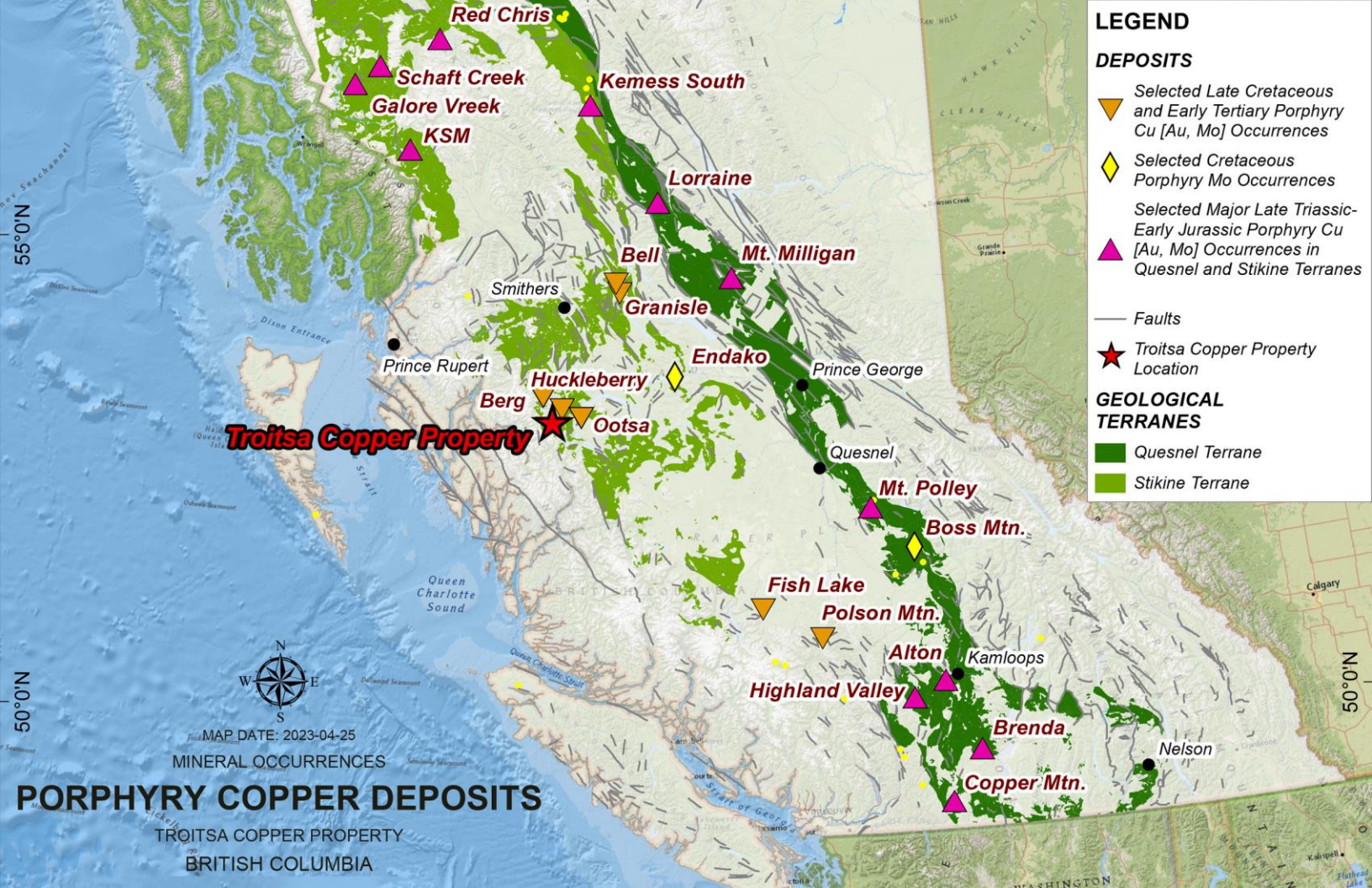
**NEW ENERGY METALS**  
CORP.

TSX-V: **ENRG**

OTC: **NRGYF**

The Troitsa Copper Property consists of 21 mineral tenures totaling 51 square kilometres located in Central British Columbia. The property is accessible by helicopter from Smithers, Houston or Terrace as well as logging roads on the south side.





**LEGEND**

**DEPOSITS**

- Selected Late Cretaceous and Early Tertiary Porphyry Cu [Au, Mo] Occurrences
- Selected Cretaceous Porphyry Mo Occurrences
- Selected Major Late Triassic-Early Jurassic Porphyry Cu [Au, Mo] Occurrences in Quesnel and Stikine Terranes

- Faults
- Troitsa Copper Property Location

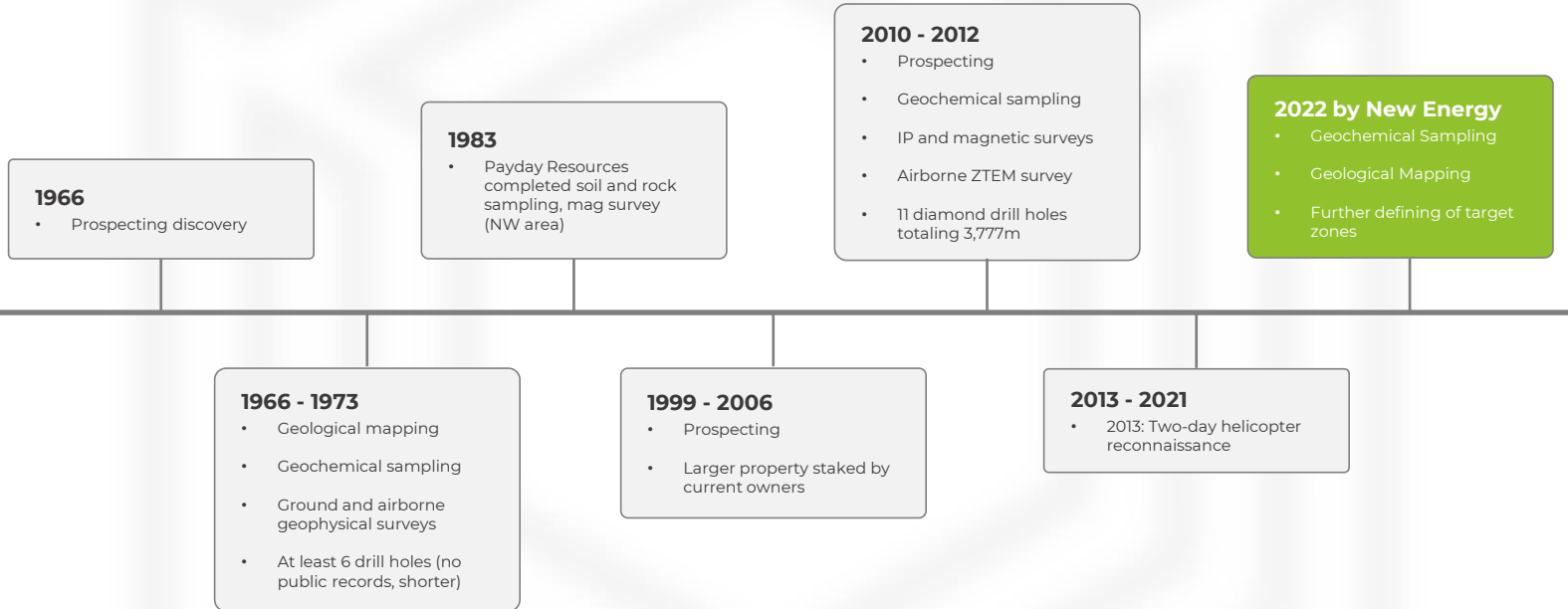
**GEOLOGICAL TERRANES**

- Quesnel Terrane
- Stikine Terrane

**PORPHYRY COPPER DEPOSITS**

TROITSA COPPER PROPERTY  
BRITISH COLUMBIA

# HISTORIC WORK



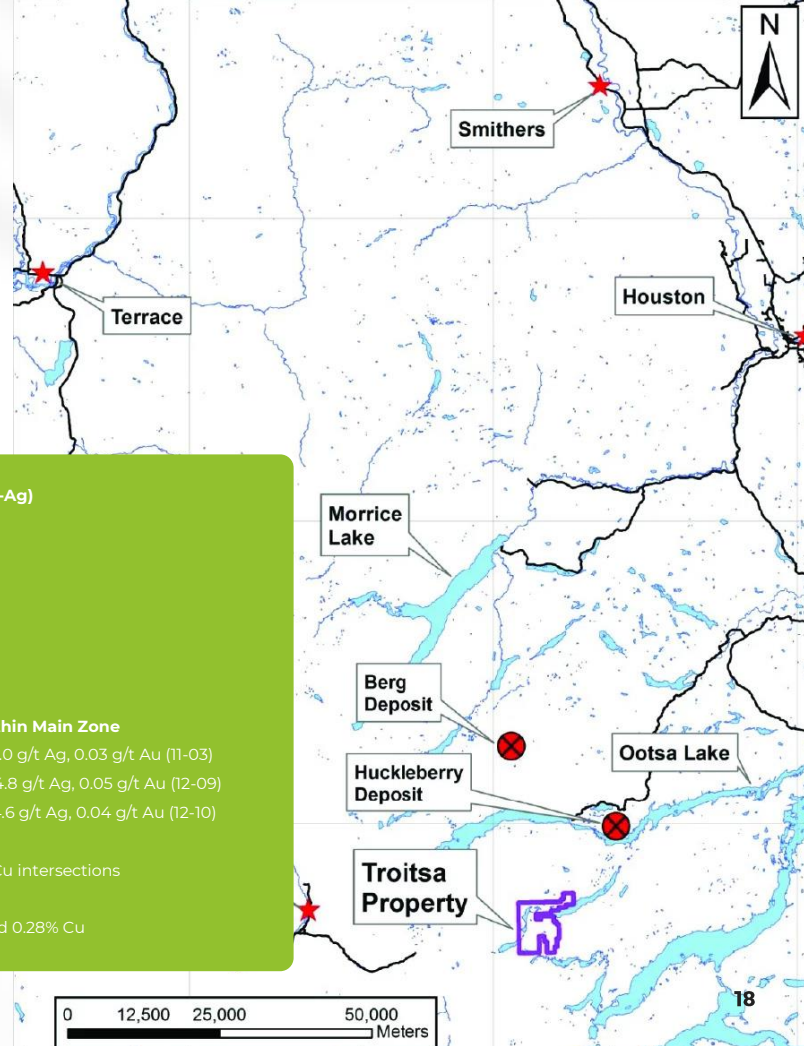
Troitsa hosts the **Main Zone**, a magnetic anomaly outlining a large intrusion mapped by BC Geological Survey, as well as a dozen untested large coincident IP chargeability & resistivity anomalies. Outside the Main Zone, previous exploration was largely limited to prospecting. Retreating glaciers exposed new areas near mineralization since last the property was last worked in 2012.

#### Main Zone – Porphyry Cu (Mo-Au-Ag)

- 225m @ 0.12% Cu (11-01)
- 164m @ 0.20% Cu (11-07)
- 355m @ 0.12% Cu (11-02)
- 265m @ 0.17% Cu (11-09)
- 245m @ 0.14% Cu (11-04)
- 170m @ 0.22% Cu (12-10)

#### Higher grade porphyry dykes within Main Zone

- 14m @ 0.63% Cu, 0.010% Mo, 7.0 g/t Ag, 0.03 g/t Au (11-03)
- 19m @ 0.65% Cu, 0.004% Mo, 4.8 g/t Ag, 0.05 g/t Au (12-09)
- 25m @ 0.71% Cu, 0.002% Mo, 4.6 g/t Ag, 0.04 g/t Au (12-10)
- 8 of 11 holes intersected long Cu intersections
- Main Zone traced for 500m
- 121 m channel sample returned 0.28% Cu





TECK RESOURCES



20 km



COPPER MOUNTAIN MINING



IMPERIAL METALS



SURGE COPPER



NEW ENERGY METALS



TROITSA COPPER REGION

## OUR TEAM

### RISHI KWATRA

#### CEO & DIRECTOR

Mr. Kwatra has over 15 years of proven financial expertise and business acumen. His many roles include corporate finance, investor relations and mergers and acquisitions for several industry leaders. He has extensive experience in undertaking project generation and business development along with evaluating early to advanced stage M&A opportunities in the mining sector.

### KEENAN H. HOHOL

#### DIRECTOR

Mr. Hohol is a lawyer and executive with over 20 years of international advisory experience, with a record of achievements in the areas of mergers and acquisitions and corporate transactions, corporate governance and corporate development, legal and regulatory compliance, risk management, litigation management, business ethics and anti-corruption, and corporate social responsibility.

### MARC MORIN

#### DIRECTOR

Mr. Morin is a seasoned businessman and Vancouver-based entrepreneur. He began his capital markets career with a boutique merchant bank in Vancouver. He has assisted various public and private companies raise in excess of \$300-million through various institutions, with a focus throughout Europe, Asia and the United States. He has over 18 years of work experience in the public and private markets.

### NILDA RIVERA

#### CFO & CORPORATE SECRETARY

Ms. Rivera has over 20 years of experience in corporate and operational finance and managed publicly listed companies in the areas of accounting, finance, regulatory compliance and corporate governance. She was involved in IPOs, RTOs and mergers and acquisitions in several industries including cannabis, hemp, resource and technology, and assisted various start-up companies in achieving public listings.

## CAPITALIZATION

**35,446,767**  
SHARES OUTSTANDING

**4,752,600**  
WARRANTS

**2,919,000**  
OPTIONS

**43,118,367**  
FULLY DILUTED

# DISCLAIMER

This presentation is strictly confidential and any disclosure, use, copying and circulation of this presentation is prohibited without the consent of New Energy Metals Corp ("The Company").

The information contained in this presentation does not constitute or form part of, and should not be construed as, an offer or invitation to subscribe for or purchase the securities discussed herein in any jurisdiction. Neither this presentation nor any part of it shall form the basis of, or be relied upon in connection with any offer, or act as an inducement to enter into any contract or commitment whatsoever. No representation or warranty is given, express or implied, as to the accuracy of the information contained in this presentation.

This presentation contains certain forward-looking statements relating to the business, financial performance and results of the Company and/or the industry in which it operates. Forward-looking statements concern future circumstances and results and other statements that are not historical facts. The forward-looking statements, contained in this presentation, including assumptions, opinions and views of the Company or cited from third party sources are solely opinions and forecasts which are uncertain and subject to risks. A multitude of factors can cause actual events to differ significantly from any anticipated development. Neither the Company nor any such person's, officers or employees guarantee that the assumptions underlying such forward-looking statements are free from errors and omissions nor do any of them accept any responsibility for the future accuracy of the opinions expressed in this presentation or the actual occurrence of the forecasted developments.

The information contained herein has been prepared to assist the recipients in making their own evaluation on the Company and does not purport to contain all information that they may desire. In all cases, the recipients should conduct their own investigation and analysis of the Company, its business, prospects, results of operations and financial condition as well as any other information the recipients may deem relevant.

The Company does not make any representation or warranty, express or implied, as to the accuracy or completeness of this presentation or of the information contained herein and shall have no liability for the information contained in, or any omissions from, this presentation, nor for any of the written, electronic or oral communications transmitted to the recipients (including without limitation its directors, employees, representatives and advisors).

Neither the receipt of this presentation by any recipients, nor any information contained herein or supplied herewith or subsequently communicated in written, electronic or oral form to any person in connection with the contemplated issue of shares in the Company constitutes, or shall be relied upon as constituting, the giving of investment advice to any such person. Each person should make their own independent assessment of the merits of investing in the Company and should consult their own professional advisors. By receiving this presentation, you acknowledge and agree that you will be solely responsible for your own assessment of the market and the market position of the Company and that you will conduct your own analysis and are solely responsible for forming your own opinion of the potential future performance of the Company's business.



# NEW ENERGY METALS CORP.

TSX-V: **ENRG**

OTC: **NRGYF**

**NEW ENERGY IS GREEN ENERGY**

610 – 700 W Pender St.

Vancouver, BC, Canada

V6C 1G8

☎ +1 604-669-9788

✉ [rishi@new-enrg.com](mailto:rishi@new-enrg.com)

🌐 [new-enrg.com](http://new-enrg.com)